



# KITCHEN CABINET

## Focal Solutions Inc. (FSI)

Focal Solutions Inc. (FSI) is one of China's leading Export houses. Our core business is supplying / exporting Chinese origin Equipment, Machinery, raw materials and commodities to our valued customers all around the world.

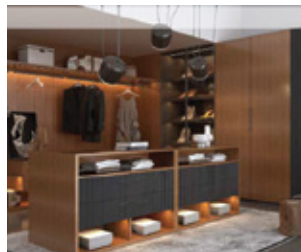


# Our **PRODUCTS**

We offer you full house solution such as Kitchen, Wardrobe, Bathroom Vanity, Living and dining room, Tatami, Study, and Children's room.

## **55° GREY.**

- German industrial style kitchen
- low-key and rich in texture
- Minimalist design, makes the cabinet very modern, with wooden dining table, bringing a touch of warmth and nature.



## **THE ORIGINAL.**



## **LOVE IN CITY**



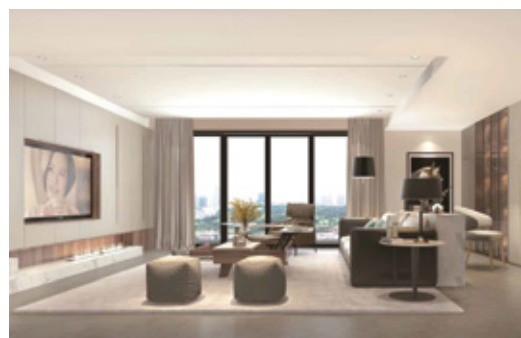
- Beautiful and elegant
- Integrates multiple functions such as a dining table, a storage table, an invisible table, with the turnover socket.

## **PLATO.**



- Italian style wood finishes kitchen cabinet.
- This series mainly design with solid wood veneer door.
- Price is much cheaper than solid wood.

## **GOLDEN YEARS.**



- Golden YEARS advocates' new minimalism.
- Pure and impurity-free artistic effects.

## **NORDIC IMPRESSION.**



## **FREE TIME.**



- Combination of gray and black

## URBAN LADY



The whole product is based on PVC warm white color, and the walnut color block is partially decorated with gold.

## UPSTART



Looks like a kind of hidden aristocratic temperament under the simple appearance.

## LA CALIFORNIA



- Wooden moist-proof kitchen
- Embedded kitchen appliances effectively save indoor space.

## MEMORY JIANGNAN



## White Jade III



- Simple and elegant

## Elizabeth II



## COFFEE LUMIERE III



Pure white, vibrant brown, fresh and eye-catching, following the American luxury design style, creating a visual space full of beauty, and elegance.

## DOORS

MELAMINE FACED CHIPBOARD DOOR



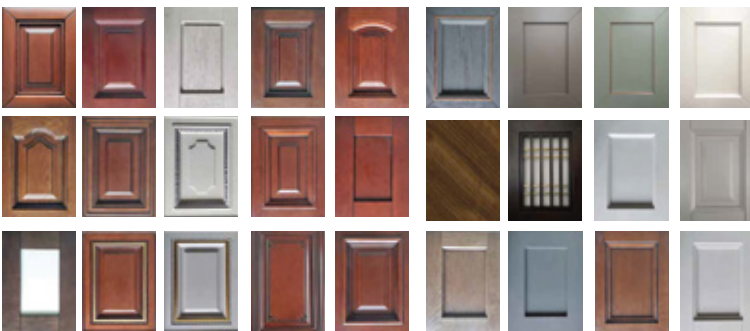
- Base board: 18mm E1 particle board
- Economic
- Durable

## PVC DOOR



- Base board: E1 MDF
- Molding available

## SOLID WOOD DOOR



## KITCHEN APPLIANCES

Range Hood & Hob Series



Range Hood

Hob

Water Appliances Series



Gas Water Heater

Water Purifier

Electric Water Heater

Built-In Kitchen Appliances Series



Steam Oven

Electric Oven

Steam & grill Oven

Sterilizer

Dishwasher

Range Cooker

## LACQUERED DOOR

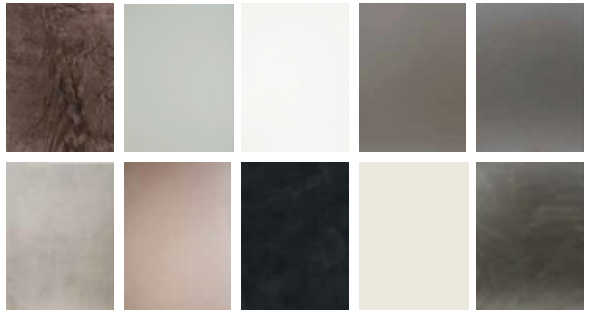


## ACRYLIC DOOR



- Base board: 18mm E1 MDF
- Anti-corrosive
- High transparency
- Hardness 4h

## UV DOOR



- Base board: 18mm E1 MDF
- High gloss
- Color resistant

## OUR SERVICES

- After sales support
- Ensures Quality & Control
- Technical Support
- Fast delivery
- Service Team

📍 Location Office 2607 Zhaoyin Mansion, 36,  
Hongkong Middle Road, Qingdao 266071, China.

Phone: +86 139 06399346

Email: sales@q-fsi.com

Website www.q-fsi.com