

WATER TANK

Introduction

FSI provides FRP pipe, FRP storage tank, SMC products, wind power product, thermoplastic products, new material products. It is the one of important manufacturing bases of composite material. The self-developed thermoplastic products had been listed in the

national torch plan. There are more than 30 senior engineers available for composite material product's design and solution. The 400,000 m² manufacturing base for composite material products with advanced manufacturing equipment and testing equipment.



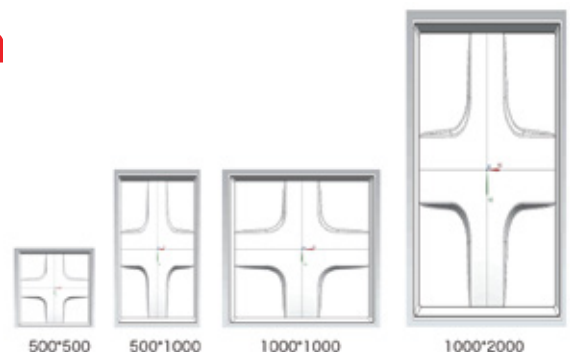
FRP water tank

Product features

- | | | | |
|------------------------|------------------|-------------------------|-------------------|
| 1. Tank foundation | 2. U-steel base | 3. Fixed angle iron | 4. Side panel 1 |
| 5. Water outlet | 6. Outer rib mat | 7. Auxiliary angle iron | 8. Side panel 2 |
| 9. Overflow flange | 10. angle iron | 11. Top panel | 12. Air vent |
| 13. Manhole | 14. Outer ladder | 15. Inner ladder | 16. Inner rib mat |
| 17. Water inlet flange | 18. Tiepiece | 19. Liquid Indicator | 20. Support |
| 21. Bottom panel | 22. Plugging | 23. Drain flange | |

FRP Molded panel specification

2000*1000mm, (Thickness included : 4mm, 5mm, 6mm, 7mm, 8mm, 9mm, 10mm, 12mm,)
1000*1000mm, 1000*500mm,
500*500 (Thickness included 4mm, 6mm, 8mm, 10~22mm, ; 4mm water tank panel is specially designed as water tank cover).



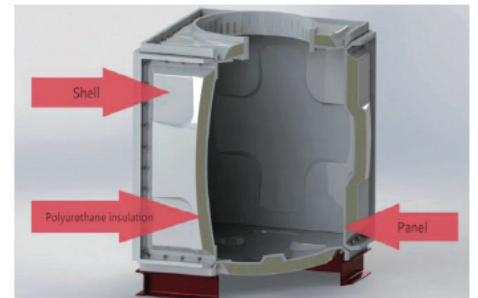
Insulated FRP water tank

Product features

Compared with the original color steel panel + polyurethane insulation layer insulation board, GRAD insulated FRP water tank adopts the SMC insulation + SPE foam insulation method and the thermal insulation board + water tank is firmly bonded through the epoxy glue to form a new insulation water tank.

Product advantages

1. The installation is simple and convenient, and the process of secondary installation of the original insulated water tank is cancelled, which saves the installation period.
2. Good thermal insulation effect.
3. Beautiful appearance, stable structure and good corrosion resistance.



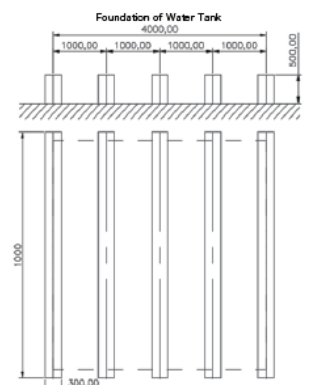
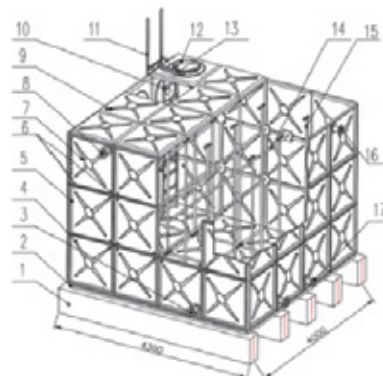
Galvanized steel water tank

Product features

The galvanized steel water tank is a new type of water tank designed and manufactured by GRAD. The manufacture and installation of this product are not affected by civil construction, no welding equipment, one-time stretch forming, beautiful and durable, prevent secondary pollution of water quality, and conform to the standardization and system of building products. Chemical and factory requirements.

Galvanized steel water tank structure diagram

- | | |
|-------------------------------|--------------------------|
| 1. Tank foundation | 9. Top panel |
| 2. Tank base | 10. Inner ladder |
| 3. D outlet | 11. Outer ladder |
| 4. Side panel 1 | 12. Manhole |
| 5. Side panel 2 | 13. Manhole cover |
| 6. Bolted flat mat connection | 14. Tiepiece |
| 7. Side panel 3 1 | 15. Support |
| 8. Overfall 1 | 16. (double) water inlet |
| 17. (double) water outlet | |



Stainless steel welding-free water tank

Product features

The appearance of the water tank is beautiful and elegant, one-time stretch forming, no welding is required, and the defects of the corrosion-resistant welding joint of the stainless steel welding water tank are eliminated.

2. The whole water tank is bolted;The size can be arbitrarily combined, and it is easy to assemble and disassemble;No welding equipment is needed during installation.
3. The assembled stainless steel water tank is simple and quick to construct, and does not require a argon arc welding welder. (Example: A 50m³ water tank requires only 48 hours to install).
4. The water tank connectors are connected by special materials developed by the Grad Group.
5. The water tank sealing material is anti-aging, high temperature resistant, corrosion resistant, no secondary pollution, and the service life and sanitation are up to relevant standards.
6. The assembled stainless steel water tank has high preservation rate, the water tank is molded and detachable, and it can be used for secondary assembly

Stainless steel welded water tank

Product features

Stainless steel water tank is generally made of SUS304 stainless steel sheet, which has stable physical and chemical properties,

no pollution to water quality, and ensures clean and hygienic water quality;

2. Stamping and forming, high strength, light weight, neat appearance, beautiful and elegant;
3. The water tank panel is generally made of above 3042B board with high nickel 8.0, the surface is smooth and beautiful, and easy to clean;
4. Due to the dense oxide layer on the surface, the corrosion resistance is superior and the sealing performance is good;
5. High impact resistance and strong seismic performance;
6. Compared with other types of water tanks, the selection of high quality materials; High quality food grade stainless steel SUS304 greatly prolongs the service life of the water tank, and it's better prevent second

ary pollution of water quality.

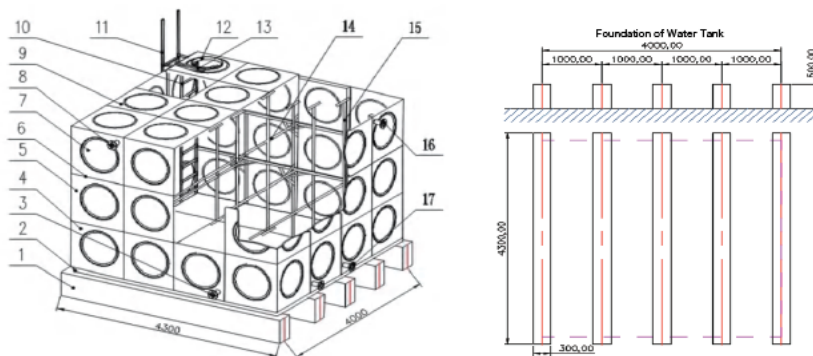
The structure is unique and reasonable: The high-strength stamping panel and the uniform stainless steel ribs in the tank make the pressure uniform and reasonable.

Quick construction: standard stamping module 1500×1000, 1500×500, 1000×1000, 1000×5000, 500×500mm free assembly on-site assembly and welding, no lifting equipment required.

Range

Stainless steel water tank is suitable for large hotels, institutions, apartments, research and teaching buildings, food processing, medical and health, electronics industry and other places with high water quality requirements (Except the user of high chloride ion content in water).

Stainless steel welding water tank structure diagram:



📍 Location Office 2607 Zhaoyin Mansion, 36,
Hongkong Middle Road, Qingdao 266071, China.